

CATCO FILTER HEATER PACKAGE

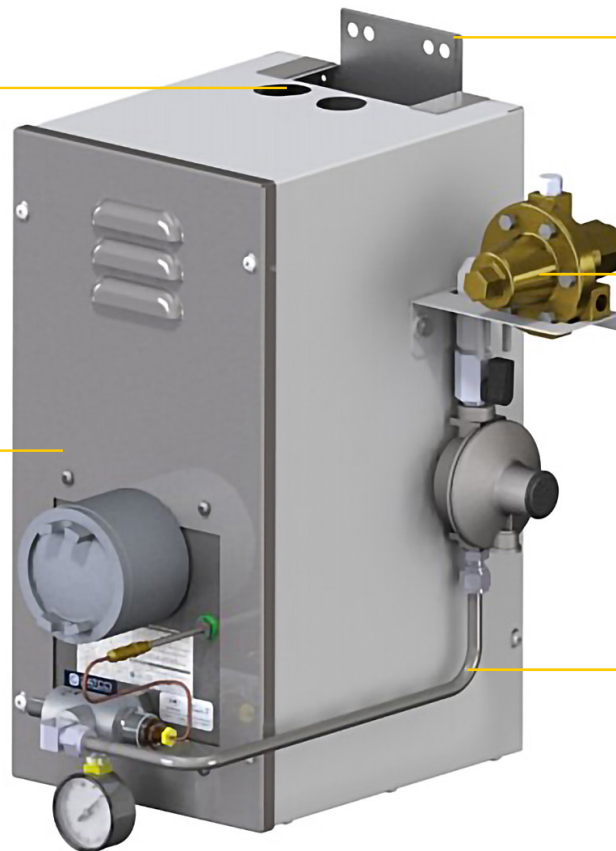
The Catco Filter Heater package is designed to fit around a variety of filter dryers. Specifically, this fits Becker and Welker instrumentation filters.

The filter prevents knocked out liquids from freezing inside the filter and also heats the gas being supplied to the instrumentation.

The package includes a fuel-gas manifold with a low-pressure fuel gas regulator, on-off ball valve and pressure gauge.

+ FILTER INLET/
OUTLET

+ 26-1665
ENCLOSURE
PACKAGE



+ INCLUDES 2"
U-BOLTS FOR
MOUNTING

+ 50-040 HIGH
PRESSURE
REGULATOR

+ FUEL GAS
MANIFOLD